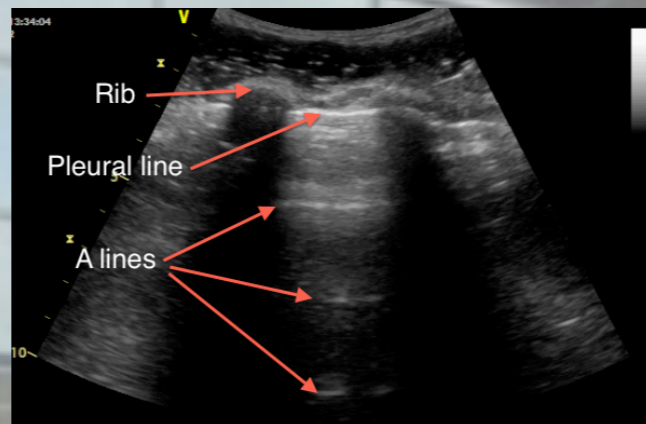
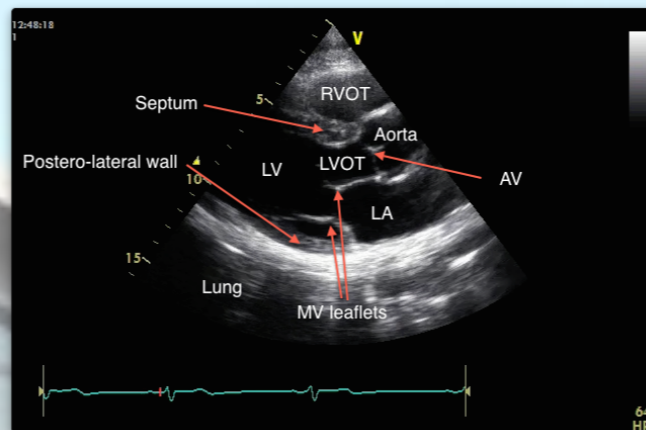


**8th November:  
FICE  
Focused echo**

**9th November:  
CUSIC / FAMUS  
Lung, abdomen, DVT**

Expert faculty:  
CUSIC, FAMUS and BSE committee members  
Intensive Care, Cardiology and Acute Medicine  
Consultants

Lots of hands-on scanning time in  
small groups plus lectures



# ULTRASOUND FOR INTENSIVE CARE, ACUTE AND EMERGENCY MEDICINE

**8th and 9th November 2017  
Shropshire Conference Centre  
Royal Shrewsbury Hospital**

Option to attend 1 or 2 days  
1 day £200  
2 days £350

Bookings and information:  
Julie 01743 261196  
[julie.pascoe@sath.nhs.uk](mailto:julie.pascoe@sath.nhs.uk)



Machines provided by GE

